
Relativity®

DBA Installation Guide

Version 4.2

LIANT

Retooling Enterprise Systems

Copyright © 1994-2002 by Liant Software Corporation. All rights reserved.
Printed in U.S.A.

No part of this publication may be reproduced, stored in a retrieval system or transmitted, in any form or by any means, electronic, mechanical, photocopied, recorded, or otherwise, without prior written permission of Liant Software Corporation.

The software described in this document is furnished under license and may be copied (with inclusion of the copyright notice) only in accordance with the terms of such license.

The information in this document is subject to change without prior notice. Liant Software Corporation assumes no responsibility for any errors that may appear in this document.

Companies, names, and data used in examples herein are fictitious.

Relativity, RM/COBOL, and RM/InfoExpress are registered trademarks of Liant Software Corporation.

Micro Focus is a registered trademark of Micro Focus International Limited.

Microsoft, Windows, Windows 98, Windows Me, Windows NT, Windows 2000, and Windows XP are registered trademarks of Microsoft Corporation in the United States and/or other countries.

UNIX is a registered trademark in the United States and other countries, licensed exclusively through X/Open Company Ltd.

Simba is a registered trademark of Simba Technologies.

Other companies mentioned herein own various trademarks.

Liant Software Corporation

8911 N. Capital of Texas Highway
Austin, TX 78759
U.S.A.

Phone (512) 343-1010
(800) 762-6265

Fax (512) 343-9487

Web Site <http://www.liant.com>

503133 Relativity DBA Installation Guide
Version 4.2
Release date August 2002

Contents

Preface	1
Introducing the Relativity DBA	1
Related Relativity Documentation.....	2
Conventions Used in this Document	3
Registration	4
Technical Support	4
Support Guidelines.....	5
Test Cases	5
Installation	7
System Requirements	7
Installing the Relativity DBA.....	8
Automated Installation	9
Removing the Relativity DBA	10
Verification.....	13
Methodology	13
Prerequisites.....	14
Starting the Relativity DBA	14
Opening a Data Source.....	15
Viewing a Table Connection.....	17
Using Online Help.....	18
Closing the Data Source.....	19
Exiting the Relativity DBA	19

Preface

Introducing the Relativity DBA

The Relativity DBA (Database Administrator) is an interactive, Windows-based tool that enables the System Administrator at the end user location to maintain and manage the Relativity database and the security of the Relativity database.

The Relativity DBA provides the following functions:

- Defines and authorizes users of a Relativity database.
- Restricts the view of the data for individual groups of users.
- Maintains the linkages, known as table connections, between table definitions and physical COBOL data files.
- Manages date constants.
- Merges security and table connection information into a new catalog (an optional function controlled by the catalog developer).
- Produces reports on security and connections.

This manual, which is part of the Relativity document set listed on page 2, describes how to install the Relativity DBA software component and verify that the installation was successful.

In addition, your Relativity package contains the document, *The Theory of Relativity, A Primer*, which defines specific terminology and provides a comprehensive overview of the Relativity software tools and their functions. Before you install this Relativity product, be sure to read this book.

Related Relativity Documentation

In addition to the *Relativity DBA Installation Guide* and *The Theory of Relativity, A Primer*, the complete Relativity documentation set consists of the following items:

- **Relativity Client/Server Installation Guide.** A document (one for UNIX and one for Windows NT) that is intended for a System Administrator. It describes the following:
 - How to install the Relativity Data Server software component on a computer running either a UNIX or Windows NT operating system and verify that the installation was successful.
 - How to:
 - Install the Relativity Data Client software component on a secure Windows workstation (such as the workstation belonging to a Database Administrator) for the purpose of catalog development.
 - Install the Relativity Server Administrator utility program in order define a server for the client and configure a server data source.
 - Verify communications between the client and the server.
 - How to install the Relativity Data Client software component on an end user's Windows workstation and verify that the installation was successful by configuring a client data source and associating it with a server data source.
- **Relativity Data Manager Installation Guide.** A document that describes how to install and verify the Relativity Data Manager software component on a Windows-based workstation.
- **Relativity Designer Installation Guide.** A document that describes how to install and verify the Relativity Designer software component on a Windows-based workstation.
- **Relativity Java Client User's Guide.** An HTML document, located on the Relativity product CD, that describes the installation and verification of the Relativity Java Client as well as information about deploying it with Java applications and applets, and setting up data source connections. The Java Client is a Java Database Connectivity (JDBC) component that resides in a Java runtime environment (JRE).

- **Relativity Online Help Documentation.** An online help documentation system that provides fast access to detailed information on Relativity features and options. The help system also contains step-by-step presentations on how to accomplish specific tasks with Relativity and an extensive glossary. A separate help file is provided for each of the various Relativity tools: the DBMS, the Designer, the DBA, and the Server Administrator. For more details, see page 18.
- **Relativity README Files.** A set of online HTML documents that list any changes to the Relativity documentation since its publication and contain new technical information that supplements the documentation.

Conventions Used in this Document

This document contains visual cues to help the reader identify important information.

Text Convention	Indicates
Initial Capitals	Menu names, command names, dialog box and form titles.
Bold	Menu names, command and button names. Other elements to be selected or typed to accomplish an action. Label on input media used during installation.
<i>Italic</i>	Reference to a topic in the current document or another Relativity document. Reference to another document.
<i>Bold Italic</i>	Variables.

Registration

Please take a moment to fill out and mail (or fax) the registration card you received with Relativity. You can also complete this process by registering your Liant product online at: <http://www.liant.com>.

Registering your product entitles you to the following benefits:

- **Customer support.** Free 30-day telephone support, including direct access to support personnel and 24-hour message service.
- **Special upgrades.** Free media updates and upgrades within 60 days of purchase.
- **Product information.** Notification of upgrades or revisions to Relativity when they are released.

You can also receive up-to-date information about Liant and all its products via our Web site. Check back often for updated content.

Technical Support

Liant Software Corporation is dedicated to helping you achieve the highest possible performance from the Liant family of products. The technical support staff is committed to providing you prompt and professional service when you have problems or questions about your Liant products.

Technical support services are subject to Liant's prices, terms, and conditions in place at the time the service is requested.

While it is not possible to maintain and support specific releases of all software indefinitely, we offer priority support for the most current release of each product. For customers who elect not to upgrade to the most current release of the products, support is provided on a limited basis, as time and resources allow.

Support Guidelines

When you need assistance, you can expedite your call by having the following information available for the technical support representative:

- Company name and contact information.
- Liant product serial number (found on the media label, registration card, or product banner message).
- Liant product version number.
- Operating system and version number.
- Hardware, related equipment, and terminal type.
- Exact message appearing on screen.
- Concise explanation of the problem and process involved when the problem occurred.

Test Cases

You may be asked for an example (test case) of the source that demonstrates the problem.

- The smaller the test case is, the faster we will be able to isolate the cause of the problem.
- Do not send full applications.
- Reduce the test case to the smallest possible combination of components required to reproduce the problem.
- If you have very large data files, write a small program to read in your current data files and to create new data files with as few records as necessary to reproduce the problem.
- Test the test case before sending it to us to ensure that you have included all the necessary components to run the test case.

When submitting your test case, please include a README text file that explains the problems. This file must include information regarding the hardware, operating system, versions of all relevant software (including the operating system and all Liant products).

Installation

This chapter describes how to install the Relativity DBA software program on a Microsoft Windows operating system.

System Requirements

Installation of the Relativity DBA on a Windows-based workstation for application development requires the following minimum software and hardware.

Component	Requirement
<i>Computer</i>	Pentium-class processor or higher.
<i>Operating System</i>	Microsoft Windows 98 or Windows 98 Second Edition (SE), Windows Millennium Edition (Me), Windows NT 4.0 or later (Service Pack 6 or higher recommended), Windows 2000, or Windows XP.
<i>Memory</i>	64 MB is recommended.
<i>Disk Space</i>	A hard drive with at least 11 MB of free disk space.
<i>Installation Media</i>	One CD-ROM drive and one 3.5" diskette drive.
<i>Monitor</i>	800x600 resolution is required. Higher resolution is recommended.
<i>Internet Browser</i>	A browser (for example, Netscape or Internet Explorer) capable of viewing HTML files, such as the README text or other documents that are available in this format.

Installing the Relativity DBA

Note If you have a version of Relativity that supports the uninstall process, you should remove it prior to installing a newer version. (See “Removing the Relativity DBA” on page 10.)

The Relativity DBA is installed on a Windows workstation from the CD-ROM. This installation process also may be automated, as described on page 9. To verify the installation, see page 13.

To install the Relativity DBA software from CD-ROM:

1. Start Windows.

CAUTION Close all other applications before proceeding with the installation.

2. Insert the product CD-ROM in the appropriate CD-ROM drive.
3. Do one of the following:
 - If the installation program starts automatically, proceed to Step 4.
 - If the installation program does not start automatically, click **Start**, and then click **Run**. In the Run dialog box, in Open, type

`d:autorun`

where *d* is the drive letter of the CD-ROM. Click **OK**.

4. If the installation starts automatically or if you start it using the **autorun** command, click **DBA Installation** to display the following list of options:
 - Click the **View the README file** option to review important last-minute information about Relativity.
 - Click the **View the Installation Documentation** option to read or install the documentation for this product that is provided on the CD-ROM.
 - Click the **Install the Relativity DBA** option to begin the actual installation process.
5. Follow the instructions presented on the installation dialog boxes.
6. When the Software License Agreement dialog box opens, you must click **Yes** in order to continue with the installation.

7. When the Liant License File dialog box opens, insert the license diskette that came as part of the installation media into drive A. Continue to follow the instructions presented on your screen.

Note 1 If you are using a drive other than A, be sure to correct the location of the license file in the Liant License File dialog box.

Note 2 If necessary, the LIANT.LIC file can be copied to a location on a hard drive and that location can be specified during installation.
8. When the Choose Destination Location dialog box opens, note that the Destination Folder box indicates the location on your hard drive where Relativity will be installed.
9. When the Select Program Folder dialog box opens, specify the program folder name that will appear on the Windows Start menu.
10. When the Setup Complete dialog box opens, select the check box to register your product online or click **Finish** to close the dialog box.

Automated Installation

You can also automate the installation program for the Relativity DBA, which allows the installation of the DBA to be incorporated with the installation of your product. To automate the installation, use a set of options that predefine answers to the installation prompts. The predefined answers are supplied on the command line to the **setup** command. You can also configure the installation procedures not to prompt for questions at all.

The following set of command line options can be used to change the initial default values for the installation prompts presented to the user. Note that the **-_AUTO** option is used to prevent any prompting by the Relativity DBA installation program. In order for the calling installation program to wait for the DBA installation program, you must add the **-SMS** option as the very last option on the command line. This option allows the calling installation program to determine when the Relativity DBA installation program completes.

Note Option values that contain spaces must be enclosed in quotes (“ ”) or square brackets ([]).

- **-_AUTO=Y**. This option specifies automatic installation without prompting. The default is to prompt the user during installation.
- **-_FOLDER=*folder***. This option specifies *folder* as the folder for icons. The default is Relativity.

- **-_LICENSE=*license file*.** This option specifies that *license file* is the location of the license file. The default is A:\LIANT.LIC.

Note If necessary, the LIANT.LIC file can be copied to a location on a hard drive and that location can be specified during installation.

- **-_ORG=*organization*.** This option specifies *organization* as the name of the user's organization. The default is blank.
- **-SMS.** This option, which allows the calling installation program to determine when the Relativity DBA installation program completes, must be entered as the last option on the command line.
- **-_TARGETDIR=*directory*.** This option specifies *directory* as the installation directory. The default is C:\Program Files\Relativity.
- **-_USERNAME=*user name*.** This option specifies *user name* as the name of the user installing the DBA. The default is blank.

Note The default values for most of these options are generally sufficient. However, the **-_LICENSE** option is particularly useful in order to specify another location for the license file other than the diskette drive.

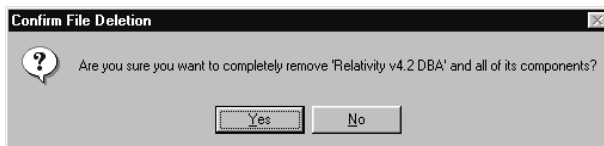
Removing the Relativity DBA

The Relativity DBA can be removed from the Windows workstation on which it was installed. This may be necessary if the Relativity DBA is to be moved to a different machine or if a new release of the Relativity DBA is to be installed on the same machine.

Removing an existing version of the Relativity DBA prior to installing a new one ensures accurate use counts on shared files and enables all files to be properly renamed during a later uninstall process.

To remove the Relativity DBA:

1. Click the **Start** button, point to **Settings**, and then click **Control Panel**.
2. Double-click **Add/Remove Programs**.
3. Click the **Install/Uninstall** tab on the Add/Remove Programs Properties dialog box.
4. In the list box, select “Relativity vX.Y DBA” where X.Y indicates the version number.
5. Click the **Add/Remove** button to proceed with the uninstall.
6. Click **Yes** in the Confirm File Deletion message box to proceed with the uninstall.



7. The Remove Programs From Your Computer dialog box is displayed, detailing the progress of the uninstall. When the uninstall is successfully completed, click **OK**.
8. Click **OK** to close Add/Remove Programs Properties dialog box.
9. Close the Windows Control Panel.

Verification

This chapter describes how to verify the installation of the Relativity DBA software on a Windows-based workstation. The verification takes place with a catalog that was installed during the installation of the Relativity Data Manager or Relativity Data Server, and a data source named Verify that was created during the verification of the installation of the Relativity Data Manager or Relativity Data Server and Data Client products.

Methodology

The Relativity DBA is used by the System Administrator to maintain the linkages between table definitions and physical COBOL files.

If the Relativity DBA has been properly installed, you will be able to view the existing table connection for the BackOrder table in the sample Verify database.

Relativity must know the physical access name information for the COBOL file that contains the actual data. The table connection consists of two important items:

1. The path name (that is, the physical filename) of a COBOL data file.
2. The table name by which SQL statements can reference the data in the file.

Relativity distinguishes between the name of a table definition and the actual SQL table name. Physical files that share the same COBOL file definition may be described by one Relativity table definition. The table name within the table connection is what an ODBC-enabled application actually “perceives” as a relational table.

Prerequisites

This verification process assumes the following:

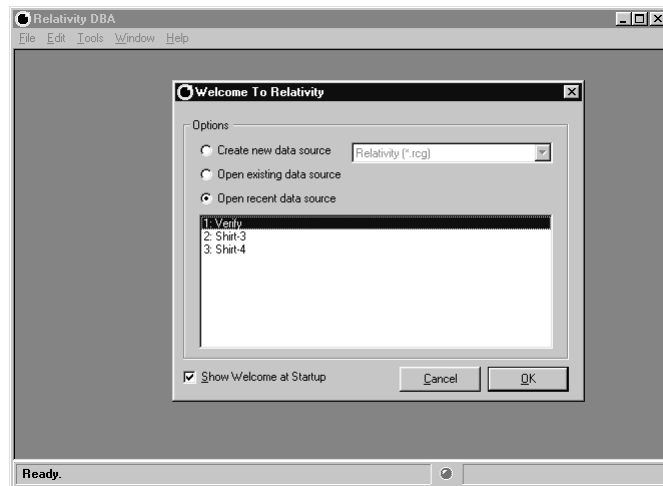
- If you are using the client/server version of Relativity, that you have followed the instructions in the *Relativity Client/Server Installation Guide* (for either UNIX or Windows, as appropriate) to install a Relativity Data Server, set up a server data source named Verify, install a Relativity Data Client on the same machine as the Relativity DBA, and set up a client data source that is also named Verify and associate it with the server data source, Verify.
- If you are using the single-tier (that is, non-client/server) version of Relativity, that you have installed a Relativity Data Manager on the same machine as the Relativity DBA and followed the instructions in the *Relativity Data Manager Installation Guide* for setting up a data source named Verify.

Starting the Relativity DBA

To start the Relativity DBA in Windows:

1. Click **Start**, point to **Programs**, point to **Relativity**, and then click **DBA**.

The Welcome to Relativity (DBA) window is displayed and you are ready to open the Verify data source.



Note The Welcome to Relativity (DBA) window appears when you first install and start the Relativity DBA. From this window, you can set up and create a new data source, or open an existing or most recently used Relativity data source. After completing the first session with Relativity, the most recently used data source is always selected by default in this window when you start Relativity again. To disable the Welcome to Relativity window after the initial installation, clear the Show Welcome at Startup check box. Subsequently, when you start another Relativity session, you will begin all operations in the main Relativity DBA window. You may, however, enable this capability again by choosing Welcome from the Tools menu.

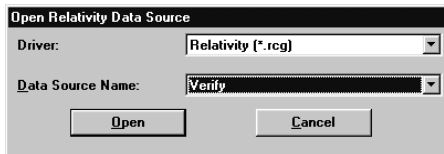
2. If you wish, click **Cancel** to dismiss the Welcome to Relativity window.

Opening a Data Source

To open the Verify data source:

1. In the main Relativity DBA window, on the File menu, click **Open Data Source**.

The Open Relativity Data Source dialog box opens.

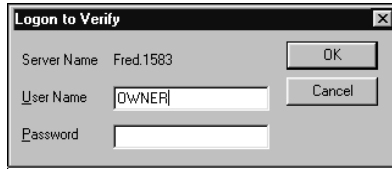


Alternatively, if the Welcome to Relativity window remains displayed, click the **Open existing data source** option, select the Verify data source from the list, and click **OK**. Proceed to Step 3.

2. In the **Data Source Name** box, select **Verify**. If necessary, click the Down Arrow to display a list of data source names.

3. Click **Open**.

On some versions of Relativity, the Logon to Data Source dialog box opens to collect information needed in order to authenticate your access to the server.



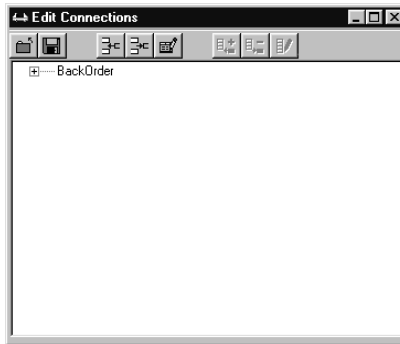
4. In the Logon to Data Source dialog box, type a user name in the appropriate box and click **OK**. (Because security has not been set up to access the Verify data source, any user name will suffice and no password is required.)

The Catalog window for the selected data source, Verify, is displayed in the main Relativity DBA window.



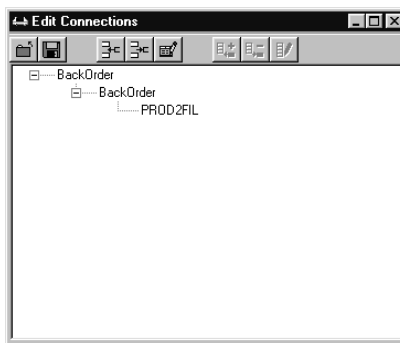
Viewing a Table Connection

1. In the Relativity DBA window, on the Edit menu, click **Connections**.
The Edit Connections form is displayed.



Alternatively, select the table name on the Tables tab in the Catalog window and click the **Connections** button. When you use this method, the table definition is already expanded to display the table connection in the Edit Connections form, as described in Step 2.

2. In the Edit Connections form, expand the table definition and display the table connection associated with the table definition:
 - a. Click the plus sign [+] preceding the table definition to display the table name, BackOrder.
 - b. Click the plus sign preceding the table name to display the path name, PROD2FIL.



The Edit Connections form shows the existing table connection (that is, the table name and the path name) for the BackOrder table, which indicates that the Relativity DBA has been installed correctly.

Using Online Help

The Relativity DBA Help file is the fundamental online reference for the Relativity DBA . It is designed to help you learn and use the product.

You can access the Relativity DBA Help file in several ways:


- In the Relativity DBA main window, from the Help menu, click **Contents** to display a list of Help topics. You can use the tabs in the Help Topics dialog box to search for information:
 - To browse through topics grouped by subject: Click the Contents tab. From here, you can go directly to more specific information and a list of all the Help topics by double-clicking any closed book icon. Then select the topic of interest from the expanded list and click the Display button. (Alternately, you can double-click the topic.) The Help window for that topic appears.
 - To see a list of alphabetized index entries (or keywords): Click the Index tab. The online index is arranged just like a book index. Click the Index tab to find specific topics listed alphabetically. Type an entry or the first few letters of the word you want to search for, or scroll through the list. Then select the topic and click the Display button.
 - To search for words or phrases that may be contained in a Help topic: Click the Find tab. Follow the instructions on your screen to complete this task.
- In the Relativity DBA main window, from the Help menu, click **Search for Help On** to display the Index tab of the Help Topics dialog box. Here you can search for topics that contain a specific term or phrase.
- While you are working in Relativity, you also can press **F1** to access the Help topic for the specific task at hand or currently selected item in the window or dialog box. (This is called context-sensitive Help.)
- If available, click a Help button in a dialog box. A Help topic window is displayed.

From the Help menu, you can also access additional online Help files:

- Click **DBMS Help File** for information on using the Relativity Data Manager.
- Click **Server Admin Help File** for information on using the Relativity Server Administrator.

Closing the Data Source


To close a data source, do one of the following:

- On the File menu, click **Close Data Source**. Shortcut: Ctrl+D.
- In the Relativity DBA window, click **Close**  in the upper-right corner of the title bar.

When you close a data source, the Relativity DBA window remains open, allowing you to reopen the data source, open another data source, or exit the Relativity DBA.

Exiting the Relativity DBA

To exit the Relativity DBA, do one of the following:

- On the File menu, click **Exit**. Shortcut: Ctrl+F4.
- In the Relativity DBA window, click **Close**  in the upper-right corner of the title bar.

